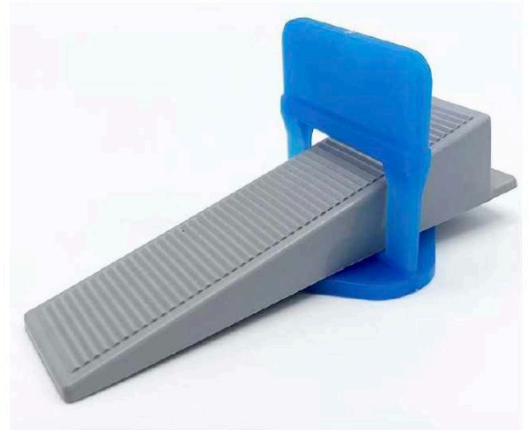


ZEMINER LEVELING SYSTEM

One of the aspects of a good tiling job is preventing lippage. The tilers used to lose too much time while trying to level the tiles, especially in large format ones. Furthermore, tilers' efforts were not preventing the lippage completely. The solution is the Zeminer Leveling System.

Zeminer offers one of the most precise and reliable Tile Leveling System. It is a 3-part system composed of a clip, a wedge and a plier. The design is very easy to learn and apply, no matter what your experience level is. The advantages of the Zeminer Leveling System;

- Decreases the tiling costs
- Speeds up installations
- Eliminates Lippage, both vertically and horizontally
- Prevents Tiler Fatigue
- Suitable for indoor and outdoor uses
- Easy to Use System
- Re-Usable Wedges
- Colorful Products
- Various packing options (100Pcs – 1000 Pcs)



Clips

- Normal clips are available in 0.5mm, 1mm, 1.5mm, 2mm, 3mm, 4mm, 5mm for 3-12mm Tiles
- XL clips are available in 0,5mm, 1mm, 1.5mm 2mm, 3mm XL Clips for 12-22mm Tiles.
- Produced from material with high tensile strength
- Precise breaking point
- Easy to remove
- No Bending over the wedges to make sure the pressure always applied vertically



Wedges

- Single model for all tiles between 3-22mm
- Precise Teeth Depth
- High Resistance underpressure
- Reusable



Plier

- Available in Metal and Plastic
- Produced from first grade material to make it more durable under pressure.
- Engineered adjustment points for precise tiling
- Ideal Pushing Angle for the wedges.
- Ergonomic designs with the hand shaped recesses



FAQ

1. Why do we need a Leveling System?

a. In the past decade, tiles got larger and larger. 60X60cm Tiles used to be the largest format tile in the market. Nowadays, we see 90X9cm and even 120X240cm. The problem with the large format tiles is that they have a bow on the surfaces. This is an inevitable natural outcome of tile production. You can easily notice this problem by placing the tiles back to back. You will see that they are not precisely flat. So when tiling, a tiler cannot physically make the bowed tiles leveled. At this point, tiler needs a leveling system.

b. Thin Set physical properties are the second reason for why we need a Leveling System.

One of the ingredients of the Thin Set is water, and after the application, the water in the Thin Set will be dried out because of the hydration. So the Thin Set can shrink and it will most probably shrink unevenly.

With the Zeminer Leveling System, the tiles are fixed in place. They won't be able to move even the Thin Set shrinks.

2. What is a large format tile?

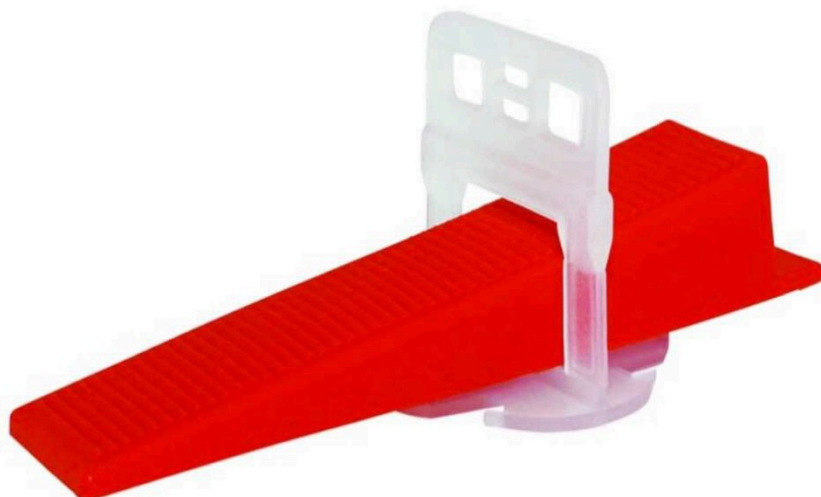
a. A Tile that has any side longer than 40cm (Approx. 15") is referred as a large format tile. It's essential to use Tile Leveling System for a good spacing and alignment when flooring with large format tiles.

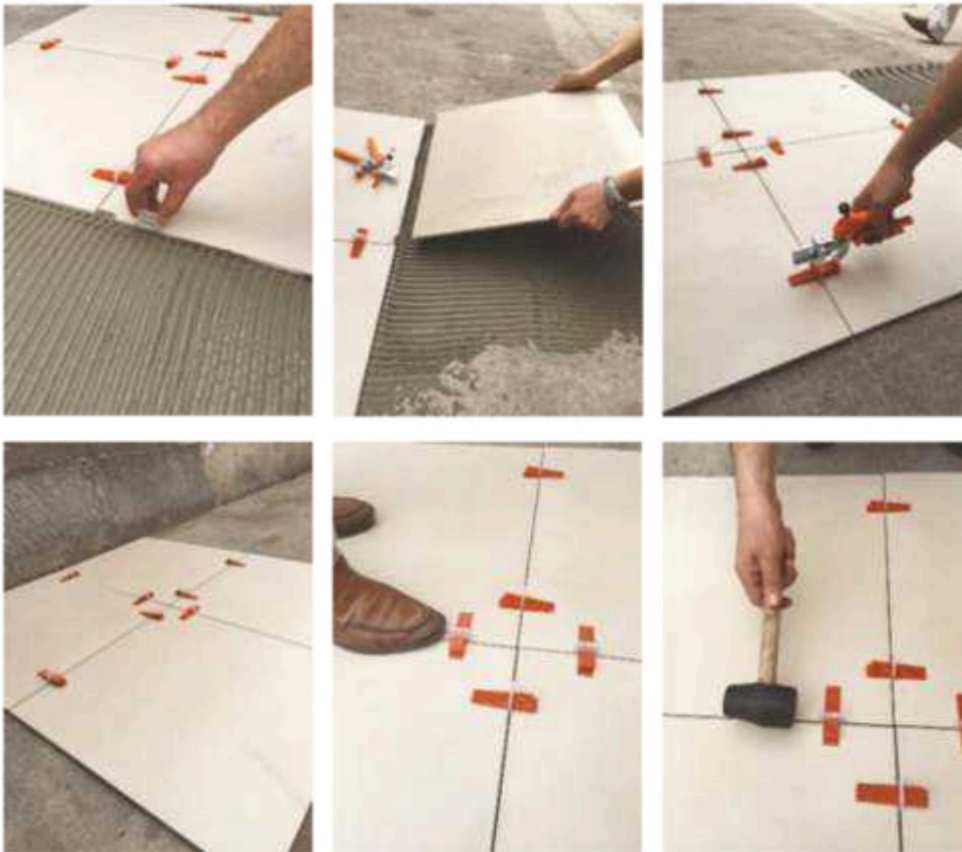
3. What is lippage?

a. Lippage simply means a vertical displacement between two adjacent tiles. Towering lippage risks the safety of pedestrians in the external areas and households in internal areas. It also causes chipping on the edges of tiles.

4. What is the standard for acceptable lippage?

The acceptable standard for lippage is the thickness of a credit card which is around 0.75mm (0.03inches)



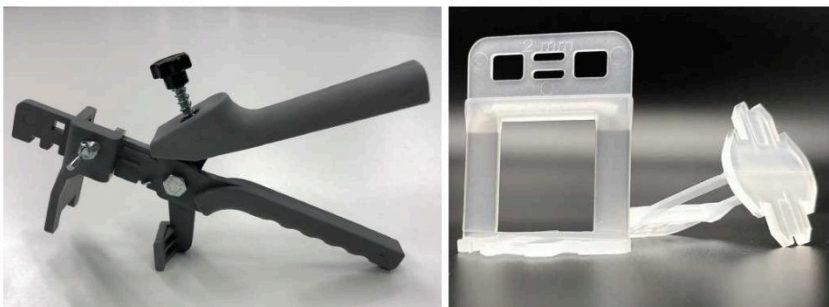


5. How do I use the system?

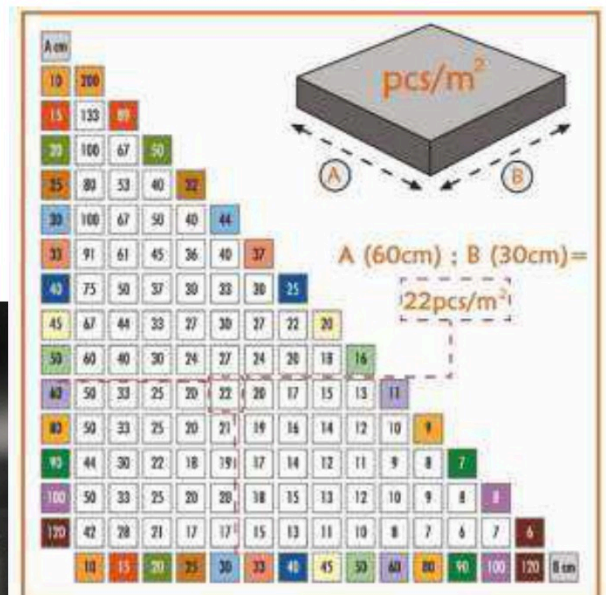
- I. Apply a thick bed of Tile Adhesive using a Trowel and place the Leveling Clips on the sides of Tile
- II. Place the second tile on the empty side of the Leveling Clips.
- III. Bed in adjoining tiles and push a Leveling Wedge into the Leveling Clips until they touch
- IV. Using the Leveling Plier, Squeeze the Wedge until the Tiles are level.
- V. Wait until the adhesive set hard, as per adhesive instructions.
- VI. Remove the Wedges and Clips using your foot or a plastic hammer
- VII. Hit the Leveling Wedge from the side, parallel to the grout lines.
- VIII. Never hit the Leveling Wedge perpendicular to the grout line.

6. How many pieces do I need?

A and B lengths refers to the various side lengths of the tile. In the table, you can easily find out the Leveling Wedges and Leveling Clips quantities, required to use per sqm for tiles with various length options. For Example, for 600X60cm Tile, we would need 11 pcs Leveling Wedges and 11 pcs Leveling Clips.



CONSUMPTION PER SQUARE METER



PACKING DETAILS&VARIATIONS

	Product Name	Dimension	Qty/Bag (PCS)	Pack Dimension (CM)	Bag/Box (PCS)	Box Dimension (CM)	Box Weight (KG)
ZMNRL001	TileLevelingWedge	Standard	100	25X30	20	60X40X36	15,8
			250	30X45	8	60X40X36	15,8
			300	30X50	6	60X40X36	14,2
			500	30X65	4	60X40X36	15,8
			1000	50X90	2	60X40X36	15,8
ZMNRL002	TileLeveling Clip (3-12mm)	1mm	100	25X30	30	60X40X36	13,2
			200	25X40	16	60X40X36	13,3
			250	25X50	12	60X40X36	13,9
			300	30X50	10	60X40X36	13
			500	30X65	6	60X40X36	13
			1000	50X80	3	60X40X36	13
ZMNRL003	TileLeveling Clip (3-12mm)	1,5mm	100	25X30	30	60X40X36	13,8
			200	25X40	16	60X40X36	13,9
			250	25X50	12	60X40X36	14,5
			300	30X50	10	60X40X36	13,6
			500	30X65	6	60X40X36	13,6
			1000	50X80	3	60X40X36	13,5
ZMNRL004	TileLeveling Clip (3-12mm)	2mm	100	25X30	30	60X40X36	14
			200	25X40	16	60X40X36	14,1
			250	25X50	12	60X40X36	14,8
			300	30X50	10	60X40X36	13,9
			500	30X65	6	60X40X36	13,9
			1000	50X80	3	60X40X36	13,8
ZMNRL005	TileLeveling Clip (3-12mm)	3mm	100	25X30	30	60X40X36	14,2
			200	25X40	16	60X40X36	14,3
			250	25X50	12	60X40X36	15
			300	30X50	10	60X40X36	14
			500	30X65	6	60X40X36	14,1
			1000	50X80	3	60X40X36	14
ZMNRL006	XL Leveling Clip (12-20mm)	1mm	100	25X30	20	60X40X36	9,1
			200	25X50	10	60X40X36	9,2
ZMNRL007	XL Leveling Clip (12-20mm)	1,5mm	100	25X30	20	60X40X36	9,5
ZMNRL008			200	25X50	10	60X40X36	9,6
ZMNRL009	XL Leveling Clip (12-20mm)	2mm	100	25X30	20	60X40X36	9,8
			200	25X50	10	60X40X36	9,9
ZMNRL010	Metal Plier	Standard	1	25X30	60	60X40X36	25,8
	PlasticPlier	Standard	1	25X30	75	60X40X36	26